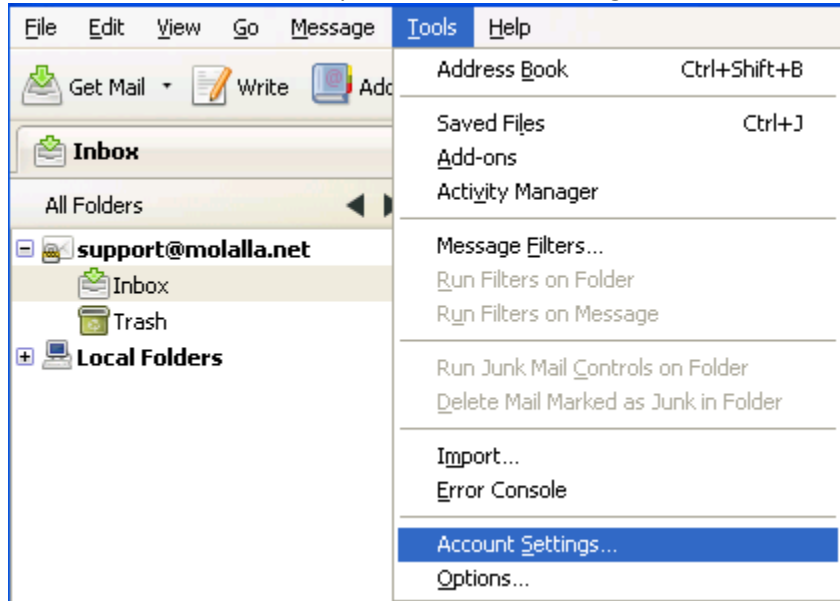
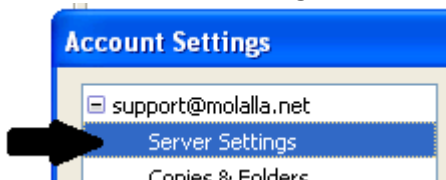


Thunderbird Verification

1. Select **Tools** from the top, then **Account Settings...**



2. Click on **Server Settings**

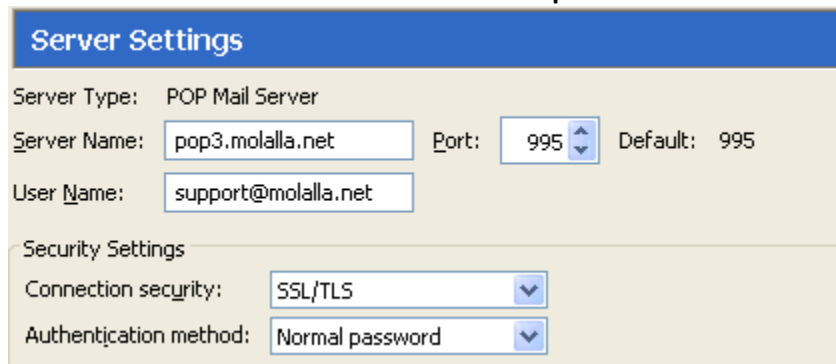


3. Verify the following fields are correct

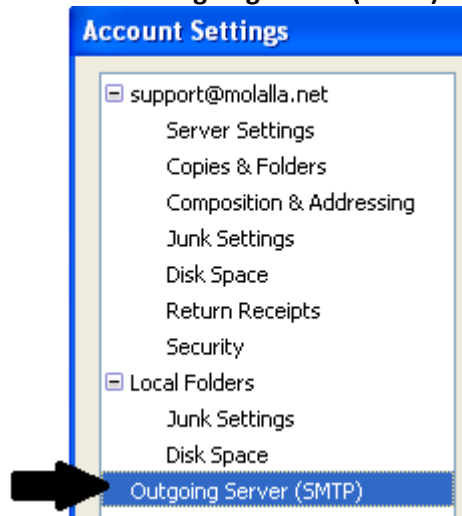
- Server Name – **pop3.molalla.net**
- Port – **995**
- User Name – **your full email address**

Security Settings

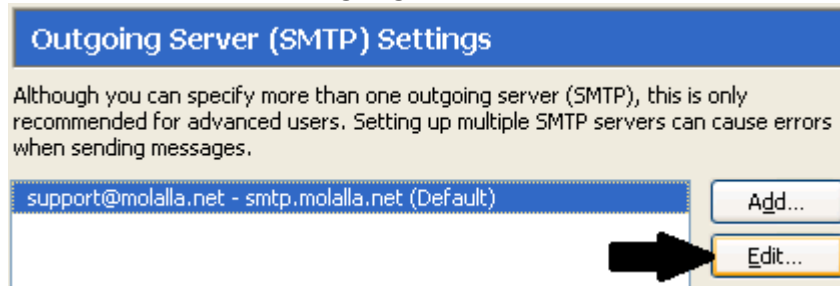
- Connection security – **SSL/TLS**
- Authentication method – **Normal password**



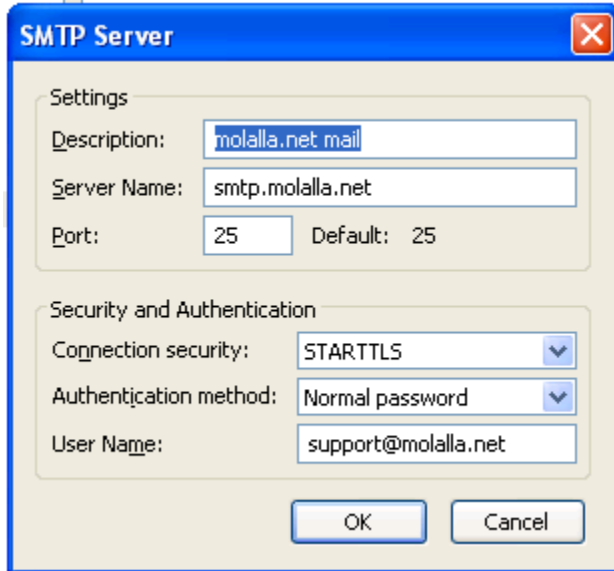
4. Click on Outgoing Server (SMTP)



5. Click on the default Outgoing server account then click on Edit...



6. Verify the following fields are correct
 - Server Name – **smtp.molalla.net**
 - Port – **25**Security and Authentication
 - Connection security – **STARTTLS**
 - Authentication method – **Normal password**
 - User Name: **your full molalla.net email address**



The image shows a screenshot of the "SMTP Server" settings dialog box. The dialog has a blue title bar with the text "SMTP Server" and a close button (red X). The main area is divided into two sections: "Settings" and "Security and Authentication".

Settings:

- Description: molalla.net mail
- Server Name: smtp.molalla.net
- Port: 25 (Default: 25)

Security and Authentication:

- Connection security: STARTTLS
- Authentication method: Normal password
- User Name: support@molalla.net

At the bottom of the dialog are two buttons: "OK" and "Cancel".

7. **Press OK** to close the SMTP Server settings, **Press OK** to close the Account Settings