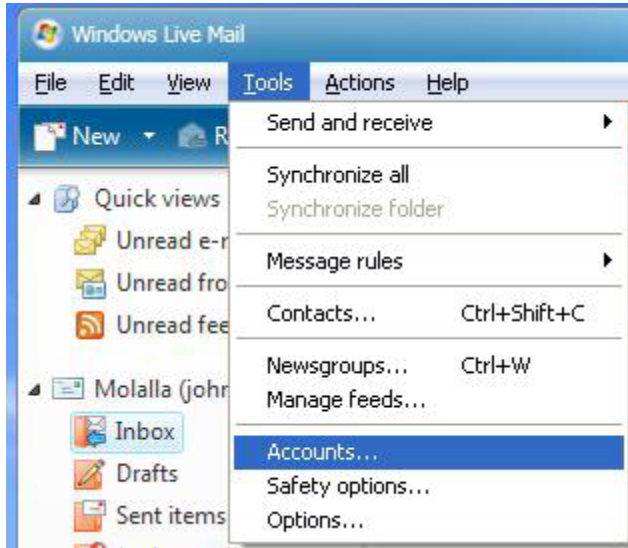


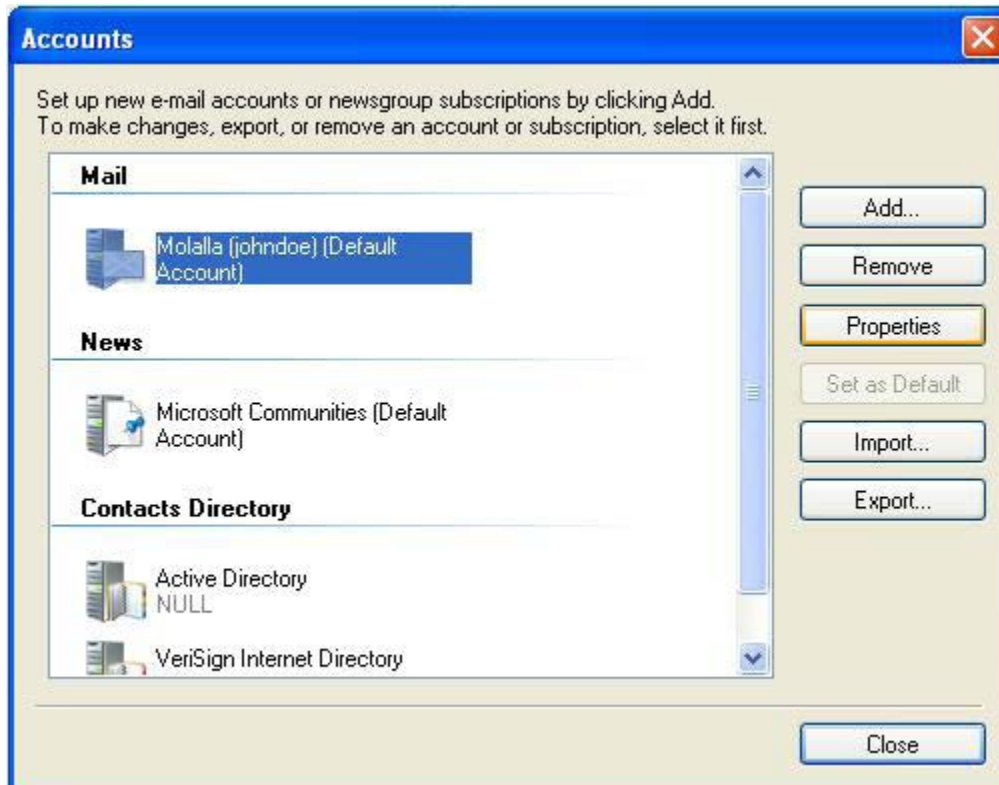
# Windows Live Mail / Windows Mail Verification

1. Open Windows Live Mail

-To see the "File Edit View Tools.." bar you may have to Press and hold Alt + T  
Select **Accounts...**

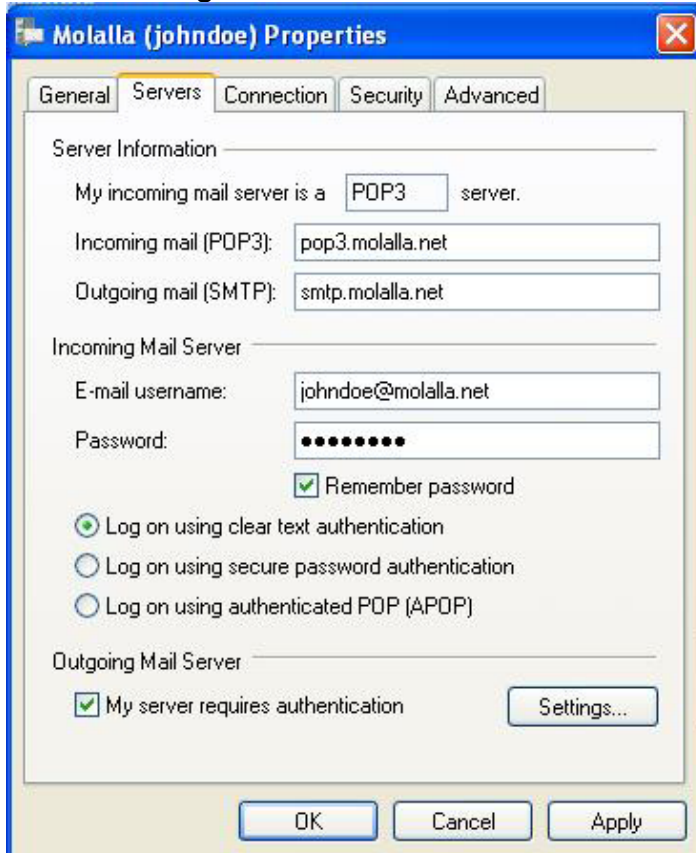


2. Select your mail account by clicking on it once and pressing properties or double clicking on it.



3. Click on the tab labeled **Servers**.
  - Verify the Incoming Mail Server (POP3) is **pop3.molalla.net**.
  - Verify the Outgoing Mail Server (SMTP) is **smtp.molalla.net**.
  - Verify the Account Name is the complete email address.
  - Verify the password is correct.
  - Verify that My Server Requires Authentication is selected.

Click on **Settings**



The screenshot shows the 'Molalla (johndoe) Properties' dialog box with the 'Servers' tab selected. The 'Server Information' section shows 'My incoming mail server is a POP3 server.' with 'Incoming mail (POP3): pop3.molalla.net' and 'Outgoing mail (SMTP): smtp.molalla.net'. The 'Incoming Mail Server' section has 'E-mail username: johndoe@molalla.net' and a masked password field with a checked 'Remember password' box. Three radio buttons are present: 'Log on using clear text authentication' (selected), 'Log on using secure password authentication', and 'Log on using authenticated POP (APOP)'. The 'Outgoing Mail Server' section has a checked 'My server requires authentication' box and a 'Settings...' button. At the bottom are 'OK', 'Cancel', and 'Apply' buttons.

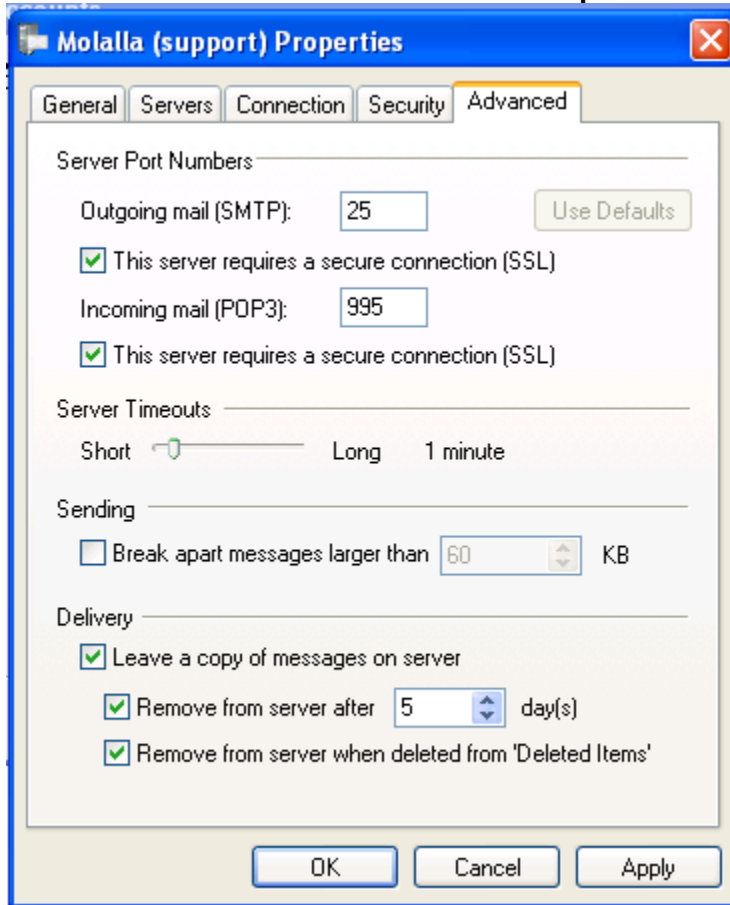
5. Verify that "Use same settings as my incoming mail server" has a dot next to it.  
Click on **OK**



The screenshot shows the 'Outgoing Mail Server' dialog box. The 'Logon Information' section has three radio buttons: 'Use same settings as my incoming mail server' (selected), 'Log on using', and 'Log on using Secure Password Authentication'. Below are 'Account name:' and 'Password:' text boxes, a checked 'Remember password' box, and an unchecked 'Log on using Secure Password Authentication' box. At the bottom are 'OK' and 'Cancel' buttons.

6. **Click on OK** and **select the Advanced Tab**. Verify or change the following information.

- Outgoing mail (SMTP): **25**
- **Check mark next to This server requires a secure connection (SSL)**
- Incoming mail (POP3): **995**
- **Check mark next to This server requires a secure connection (SSL)**



7. **Click on OK** to go back to the Accounts screen then **click on Close**.